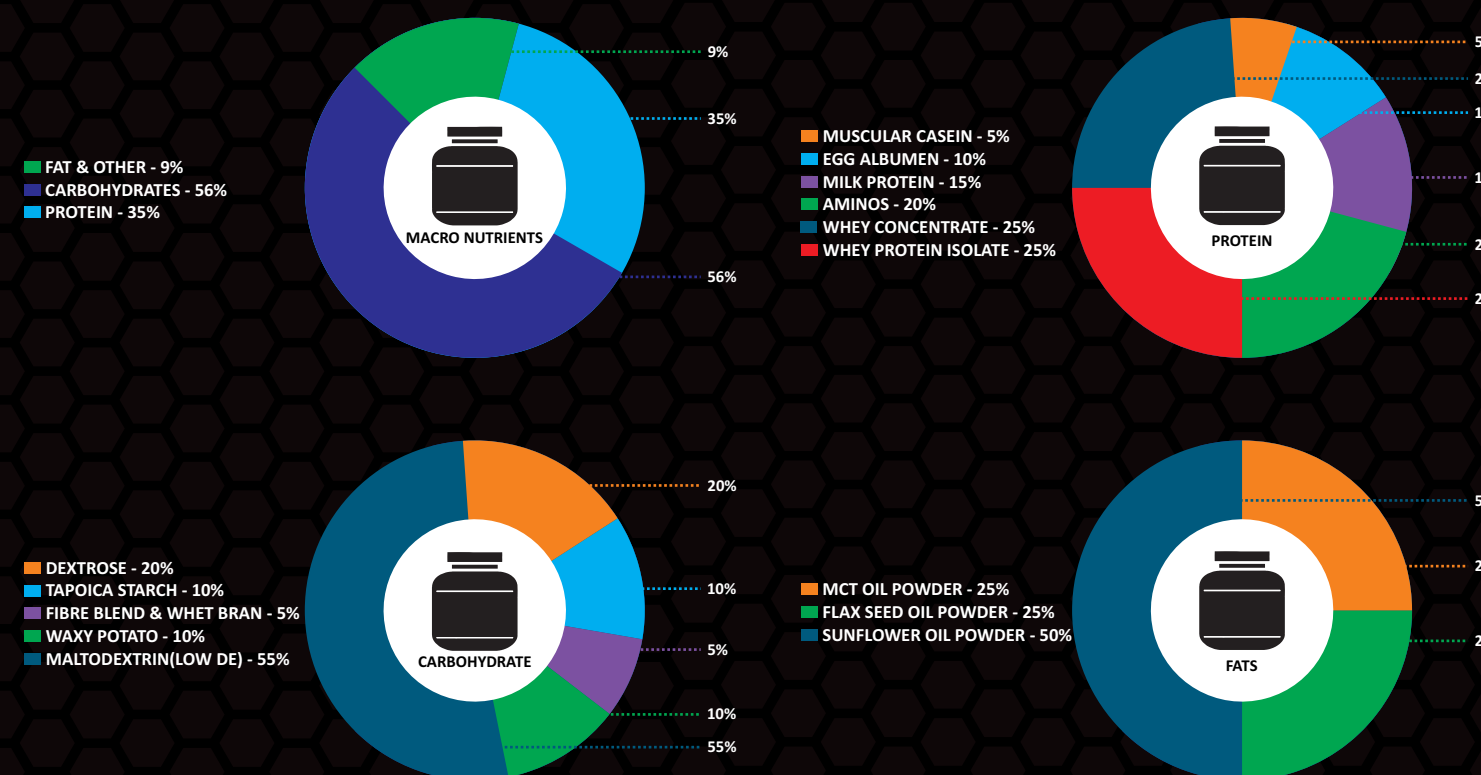




MAGNUM NUTRITION'S GUARANTEE-

MAGNUM LEAN GAIN 1:1.5 ratio of Protein to Carbs works to help optimize Lean Muscle mass gains while minimizing body fat gain. You can use it as a Meal replacer or ideally consume it twice a day with skim Milk to gain maximum benefit.



MUSCLE GROWTH / EXTREME POWER / STRENGTH / ENERGY / IMMUNITY / ENDURANCE / RECOVERY

LEAN GAIN



CHOCO DELIGHT
NATURAL & ARTIFICIAL FLAVORS

60 SERVINGS
*2 SERVINGS WITH SKIM MILK

48.6g* PROTEIN **76g*** CARBS **466*** CALORIS **2.8g*** FIBRE **3g*** CREATINE
7.83g* L-GLUTAMINE **1g*** TAURINE **1.38g*** ARGININE **11.5g*** BCAA

NUTRITION FACTS: MAGNUM LEAN GAIN-CHOCO DELIGHT

Serving Size: 1 Heaping Scoop(50g)
Servings Per Container: 3 kg (60 Servings)

Amount Per Serving	2 scoops (100g) with 400ml Water	2 scoops (100gm) With 400ml Skim Milk
Energy (Kcal)	326	466
Calories from Fat (Kcal)	10	13.6
Protein (g)	35	48.6
Total Carbohydrates (g)	56	76
Added Sugar (Sucrose)	0	0
Dietary Fibre (g)	2.8	2.8
Total Fat (g)	2.5	2.9
Trans Fatty Acids (g)	0.16	0.16
Cholesterol (mg)	12	20
Micronised Creatine Monohydrate (g)	3	3
L-Glutamine (g)	2	4.03
Taurine (g)	1	1
L-Arginine (g)	1	1.38
Instantized L-Leucine (g)	1	3.52
Instantized L-Iso Leucine (g)	0.5	2.42
Instantized L-Valine (g)	0.5	1.38
Vitamin B3 (mg)	60	60
Vitamin B6 (mcg)	200	200
Vitamin B12 (mcg)	2000	2000
Vitamin C (mg)	400	400
Calcium (mg)	800	1060
Phosphorus (mg)	400	400
Magnesium (mg)	160	160
Copper (mg)	300	300
Selenium (mcg)	70	70
Zinc (mg)	8.8	8.8
Iodine (mcg)	280	280
Iron (mg)	80	80
Sodium (mg)	280	460
Potassium (mg)	300	924
Chloride (mg)	400	400
Alpha Lipoic Acid (mg)	100	100
DIGEZYME® Digestive Enzyme Blend (mg)	100	100

Ingredients List: Carbohydrate Source (Maltodextrin (Low DE), Dextrose, Tapioca Starch, Waxy Potato Starch, Wheat Bran & FIBRIM), Protein Blend (Whey Concentrate, Whey Protein Isolate, Milk Protein, Egg Albumen, Miscellar Casein) Healthy Fats Powdered Blend (Flax Seed Oil, MCT Oil, Sunflower Oil) Amino Acid Blend (Creatine Monohydrate, L- Glutamine, L- Arginine, Taurine, BCAA), Fibre Blend (FOS & Wheat Bran) Milk, Cocoa Solids, Natural & Nature Identical Flavor, Thickener (INS 415), Emulsifier (INS 322), Sweetener (INS 955), Multi Vitamins, Multi Minerals, Salt, DIGEZYME (Digestive Enzyme Blend).

(* Sucrose / #) Approximate Values on Dry Basis
Allergen Information: Contains milk and soy (Leithin)
Ingredients.

Recommended Usage:

- Choose your Magnum Lean Gain as per your convenience
- Breakfast: Consume Magnum Lean Gain along with breakfast with skim milk to kick start your day.
- In-between meals: Consume one shake in-between meals to support a high-calorie diet for a sustained calorie supply.
- Before bed: Consume one shake with skim milk about 45-60 minutes before you sleep to fuel your muscles while sleeping.
- Note: Do Not Exceed 4 scoops (200g) in a day.

Notice:

- Use this product as a food supplement only.
- Do not use for weight reduction.
- Product sold by weight not volume.
- To preserve freshness, store this container tightly closed some place cool and dry.
- Small amounts of soy lecithin are added as an emulsifier to help with mixing.

Manufactured Exclusively for Magnum Nutrition
Pawar Nutri Food- Pune.
FSSAI : 11515036000772
Marketed by Magnum Nutrition, India
FSSAI : 11519037000555

